

# Arpeggi in Re minore

## I grado (Re minore)

CIII CI CIII

Diagram 1: CIII (4th fret) to CIII (4th fret). Fingerings: 1-4-2, 4-2-1. Hand position: 8.

Da I a II in primo rivolto

Da I in primo rivolto a II in primo rivolto

$\frac{1}{2}$  CI  $\frac{1}{2}$  CI

Diagram 2:  $\frac{1}{2}$  CI (4th fret) to  $\frac{1}{2}$  CI (2nd fret). Fingerings: 1-4-2, 2-3-1. Hand position: 8.

Da I a III

Da I a III in primo rivolto

CI CI CIII  $\frac{1}{2}$  CI

Diagram 3: CI (3rd fret) to  $\frac{1}{2}$  CI (2nd fret). Fingerings: 3-2-1, 2-3-1. Hand position: 8.

Da I in primo rivolto a III

Da I in primo rivolto a III in primo rivolto

CIII

Diagram 4: CIII (4th fret) to CIII (4th fret). Fingerings: 1-4-2, 4-3-1. Hand position: 8.

Da I a IV

Da I a IV in primo rivolto

CIII CIII

Diagram 5: CIII (4th fret) to CIII (3rd fret). Fingerings: 4-3-2, 3-2-1. Hand position: 8.

Da I in primo rivolto a IV

Da I in primo rivolto a IV in primo rivolto

CII

Diagram 6: CII (4th fret, F#) to CII (4th fret, F#). Fingerings: 1-4-2, 4-3-2. Hand position: 8.

Da I a V

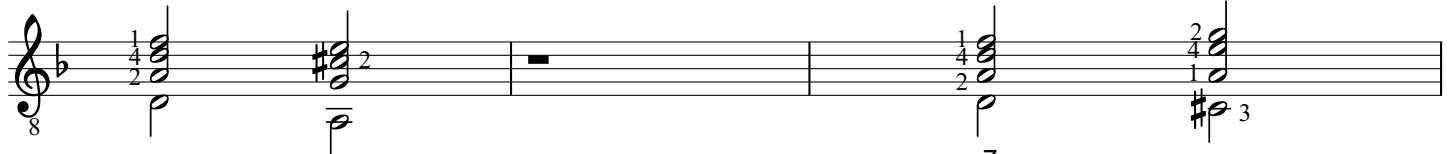
Da I a V in primo rivolto

CI CII

Diagram 7: CI (3rd fret) to CII (4th fret, F#). Fingerings: 3-2-1, 4-3-2. Hand position: 8.

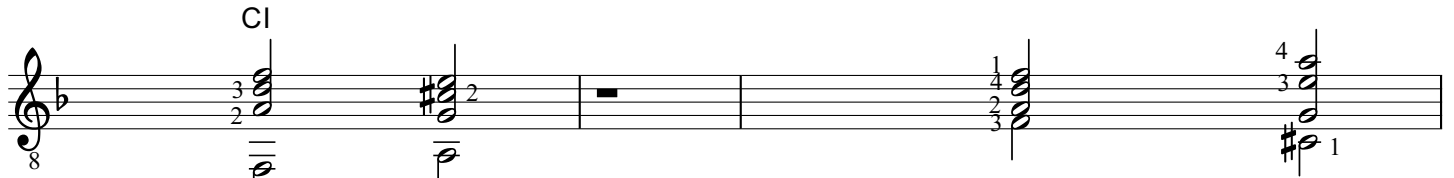
Da I in primo rivolto a V

Da I in primo rivolto a V in primo rivolto



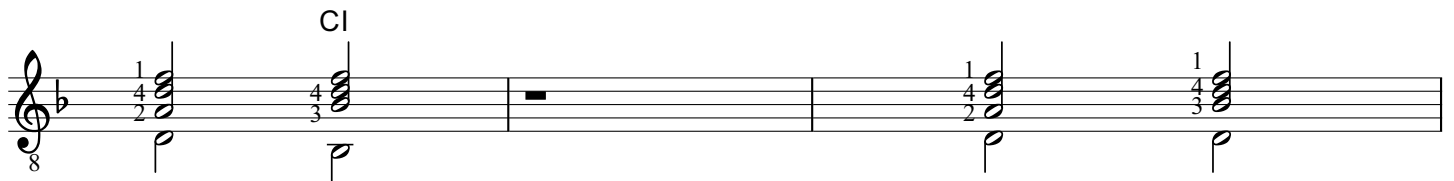
Da I a V<sup>7</sup>

Da I a V<sup>7</sup> in primo rivolto



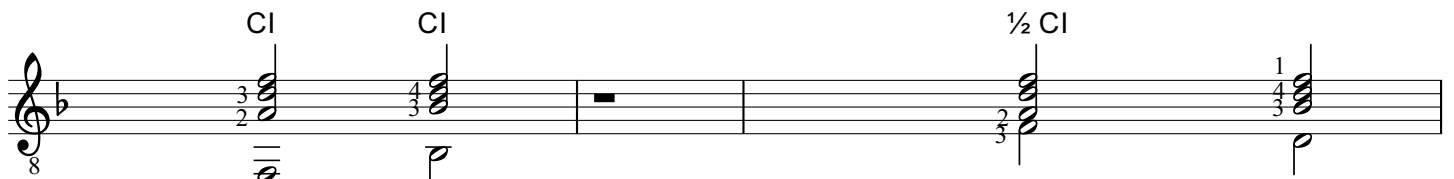
Da I in primo rivolto a V<sup>7</sup>

Da I in primo rivolto a V<sup>7</sup> in primo rivolto



Da I a VI

Da I a VI in primo rivolto



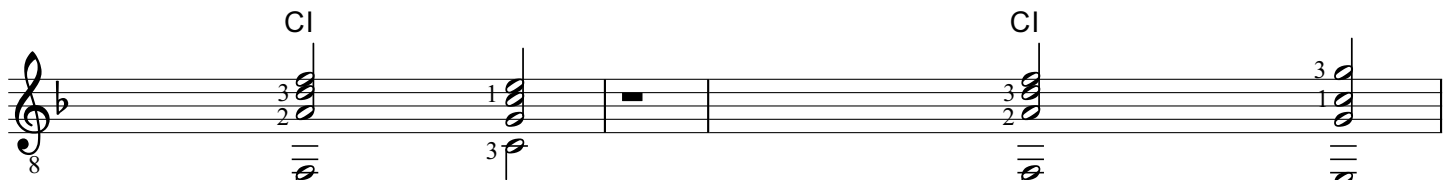
Da I in primo rivolto a VI

Da I in primo rivolto a VI in primo rivolto



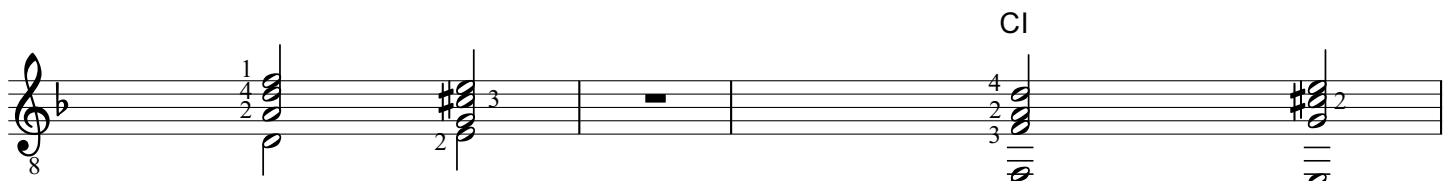
Da I a VII (dP)

Da I a VII (dP) in primo rivolto



Da I in primo rivolto a VII (dP)

Da I in primo rivolto a VII (dP) in primo rivolto



Da I a VII in primo rivolto

Da I in primo rivolto a VII in primo rivolto

## II grado (Mi diminuito)

<p>CIII</p> <p>Da II in primo rivolto a I</p>	<p>CIII</p> <p>Da II in primo rivolto a I in primo rivolto</p>
---	--

<p>CIII      CI</p> <p>Da II in primo rivolto a III</p>	<p>CIII      ½ CI</p> <p>Da II in primo rivolto a III in primo rivolto</p>
---	--

<p>CIII      CIII</p> <p>Da II in primo rivolto a IV</p>	<p>CIII</p> <p>Da II in primo rivolto a IV in primo rivolto</p>
--	---

<p>CIII      CII</p> <p>Da II in primo rivolto a V</p>	<p>½ CIII</p> <p>Da II in primo rivolto a V in primo rivolto</p>
--	--

<p>CIII</p> <p>Da II in primo rivolto a V<sup>7</sup></p>	<p>½ CIII</p> <p>Da II in primo rivolto a V<sup>7</sup> in primo rivolto</p>
---	--

<p>CIII      CI</p> <p>Da II in primo rivolto a VI</p>	<p>CIII      CIII</p> <p>Da II in primo rivolto a VI in primo rivolto</p>
--	---

# III grado (Fa maggiore)

CI

Da III a I

Da III a I in primo rivolto

$\frac{1}{2}$  CI

Da III in primo rivolto a I

Da III in primo rivolto a I in primo rivolto

CI

CIII

Da III a II in primo rivolto

Da III in primo rivolto a II in primo rivolto

CI

CIII

Da III a IV

Da III a IV in primo rivolto

$\frac{1}{2}$  CI

CIII

Da III in primo rivolto a IV

Da III in primo rivolto a IV in primo rivolto

CI

Da III a V

Da III in primo rivolto a V

CI

CII

Da III a V<sup>7</sup>

Da III in primo rivolto a V<sup>7</sup>

CI CI CI

Da III a VI

Da III a VI in primo rivolto

$\frac{1}{2}$  CI CIII

Da III in primo rivolto a VI

Da III in primo rivolto a VI in primo rivolto

CI  $\frac{1}{2}$  CI

Da III a VII in primo rivolto

Da III in primo rivolto a VII in primo rivolto

CI CI

Da III a VII (dP)

Da III a VII (dP) in primo rivolto

$\frac{1}{2}$  CI  $\frac{1}{2}$  CI

Da III in primo rivolto a VII (dP)

Da III in primo rivolto a VII (dP) in primo rivolto

# IV grado (Sol minore)

CIII

Da IV a I

Da IV a I in primo rivolto

CI

Da IV in primo rivolto a I

Da IV a I in primo rivolto

CIII

CIII

CIII

Da IV a II in primo rivolto

Da IV in primo rivolto a II in primo rivolto

CIII

CI

CIII

1/2 CI

Da IV a III

Da II a I in primo rivolto

1/2 CI

Da IV in primo rivolto a III

Da IV in primo rivolto a III in primo rivolto

CIII

1/2 CIII

Da IV a V

Da IV a V in primo rivolto

1/2 CII

CII

Da IV in primo rivolto a V

Da IV in primo rivolto a V in primo rivolto

CIII ½ CIII

Da IV a V<sup>7</sup> Da IV a V<sup>7</sup> in primo rivolto

Da IV in primo rivolto a V<sup>7</sup> Da IV in primo rivolto a V<sup>7</sup> in primo rivolto

CIII CIII

Da IV a VI Da IV a VI in primo rivolto

CI CI

Da IV in primo rivolto a VI Da IV in primo rivolto a VI in primo rivolto

CIII CII

Da IV a VII in primo rivolto Da IV in primo rivolto a VII in primo rivolto

CIII CIII

Da IV a VII (dP) Da IV a VII (dP) in primo rivolto

The image displays two musical examples on a single staff in G major. The first example shows a progression from a first inversion of D4 (G-B-A) to a first inversion of G7 (F-A-B). The second example shows a progression from a first inversion of D4 (G-B-A) to a first inversion of G7 (F-A-B) in first inversion (B-A-G).

Da IV in primo rivolto a VII (dP)

Da IV in primo rivolto a VII (dP) in primo rivolto



# V grado (La maggiore)

Da V a I

Da V a I in primo rivolto

CI

Detailed description: This block contains two musical staves. The first staff shows two chords: a V chord (F#3, C4, G#4) and an I chord (C4, E4, G4). The second staff shows two chords: a V chord in first inversion (F#3, G#4, C4) and an I chord in first inversion (C4, G4, E4). Both chords are marked with a 'CI' above them. Fingerings are indicated with numbers 1-4.

Da V in primo rivolto a I

Detailed description: This block shows a single musical staff with two chords. The first chord is V in first inversion (F#3, G#4, C4) and the second is I (C4, E4, G4). Fingerings are indicated with numbers 1-4.

Da V a VI

Da V a VI in primo rivolto

$\frac{1}{2}$  CI

CI

$\frac{1}{2}$  CV

Detailed description: This block contains two musical staves. The first staff shows two chords: a V chord (F#3, C4, G#4) and a VI chord (D4, F#4, A4). The second staff shows two chords: a V chord in first inversion (F#3, G#4, C4) and a VI chord in first inversion (D4, A4, F#4). Above the first staff, the first chord is labeled  $\frac{1}{2}$  CI and the second CI. Above the second staff, the first chord is labeled  $\frac{1}{2}$  CV and the second CV. Fingerings are indicated with numbers 1-4.

Da V in primo rivolto a VI in primo rivolto

Detailed description: This block shows a single musical staff with two chords. The first chord is V in first inversion (F#3, G#4, C4) and the second is VI in first inversion (D4, A4, F#4). Fingerings are indicated with numbers 1-4.

Da V a VII in primo rivolto

Detailed description: This block shows a single musical staff with two chords. The first chord is V (F#3, C4, G#4) and the second is VII in first inversion (F#3, G#4, A4). Fingerings are indicated with numbers 1-4.

# Settima di V grado (La maggiore settima)

CI

Da V<sup>7</sup>a I

Da V<sup>7</sup>a I in primo rivolto

Detailed description: This block shows two musical examples in treble clef with a key signature of one flat (Bb). The first example, labeled 'Da V<sup>7</sup>a I', consists of two chords: a dominant seventh chord in root position (F4, A4, Bb4, D5) and a dominant seventh chord in first inversion (F4, Bb4, D5, A4). The second example, labeled 'Da V<sup>7</sup>a I in primo rivolto', consists of two chords: a dominant seventh chord in second inversion (Bb4, D5, F4, A4) and a dominant seventh chord in third inversion (D5, F4, A4, Bb4). Fingerings are indicated by numbers 1-4 above the notes.

Da V<sup>7</sup> in primo rivolto a I

Detailed description: This block shows two musical examples in treble clef with a key signature of one flat (Bb). The first example is a dominant seventh chord in second inversion (Bb4, D5, F4, A4). The second example is a dominant seventh chord in first inversion (F4, Bb4, D5, A4). Fingerings are indicated by numbers 1-4 above the notes.

CI

Da V<sup>7</sup>a VI

Da V<sup>7</sup>a VI in primo rivolto

Detailed description: This block shows two musical examples in treble clef with a key signature of one flat (Bb). The first example, labeled 'Da V<sup>7</sup>a VI', consists of two chords: a dominant seventh chord in root position (Bb4, D5, F4, Ab4) and a dominant seventh chord in first inversion (Bb4, F4, Ab4, D5). The second example, labeled 'Da V<sup>7</sup>a VI in primo rivolto', consists of two chords: a dominant seventh chord in second inversion (F4, Ab4, Bb4, D5) and a dominant seventh chord in third inversion (D5, F4, Ab4, Bb4). Fingerings are indicated by numbers 1-4 above the notes.

Da V<sup>7</sup> in primo rivolto a VI in primo rivolto

Detailed description: This block shows two musical examples in treble clef with a key signature of one flat (Bb). The first example is a dominant seventh chord in second inversion (Bb4, D5, F4, Ab4). The second example is a dominant seventh chord in first inversion (Bb4, F4, Ab4, D5). Fingerings are indicated by numbers 1-4 above the notes.

Da V<sup>7</sup>a VII in primo rivolto

Detailed description: This block shows two musical examples in treble clef with a key signature of one flat (Bb). Both examples are dominant seventh chords in first inversion (Bb4, D5, F4, Ab4). Fingerings are indicated by numbers 1-4 above the notes.

An empty musical staff with a treble clef and a key signature of one flat (Bb).

# VI grado (Sib maggiore)

CI

Da VI a I

Da VI a I in primo rivolto

CI

Da VI in primo rivolto a I

Da VI in primo rivolto a I in primo rivolto

CI CIII

Da VI a II in primo rivolto

Da VI in primo rivolto a II in primo rivolto

CI CI ½ CI

Da VI a III

Da VI a III in primo rivolto

½ CI ½ CI

Da VI in primo rivolto a III

Da VI in primo rivolto a III in primo rivolto

CI CIII CI

Da VI a IV

Da VI a IV in primo rivolto

CIII

Da VI in primo rivolto a IV

Da VI in primo rivolto a IV in primo rivolto

CI ½ CV                      ½ CV                      CIII                      CII

Da VI a V      Da VI in primo rivolto a V                      Da VI in primo rivolto a V in primo rivolto

CI

Da VI a V<sup>7</sup>      Da VI in primo rivolto a V<sup>7</sup>                      Da VI in primo rivolto a V<sup>7</sup> in primo rivolto

CI

Da VI a VII in primo rivolto                      Da VI in primo rivolto a VII in primo rivolto

CI                      CI

Da VI a VII (dP)                      Da VI a VII (dP) in primo rivolto

CIII

Da VI in primo rivolto a VII (dP)                      Da VI in primo rivolto a VII (dP) in primo rivolto

# VII grado (Do # diminuito)

This system shows two musical staves. The first staff contains two chords: the first is labeled 'Da VII in primo rivolto a I' and the second is labeled 'Da VII in primo rivolto a I in primo rivolto'. The second chord is also labeled 'CII' above it. Both chords are in the key of D major (one sharp) and are in first inversion. The first chord has a bass note of F# and a soprano note of D. The second chord has a bass note of A and a soprano note of D.

This system shows a single musical staff with two chords, both labeled 'Da VII in primo rivolto a V7'. Both chords are in the key of D major and are in first inversion. The first chord has a bass note of F# and a soprano note of D. The second chord has a bass note of A and a soprano note of D.

This system shows two musical staves. The first staff contains two chords: the first is labeled 'Da VII in primo rivolto a VI' and the second is labeled 'Da VII in primo rivolto a VI in primo rivolto'. The second chord is also labeled 'CIII' above it. Both chords are in the key of D major and are in first inversion. The first chord has a bass note of F# and a soprano note of D. The second chord has a bass note of A and a soprano note of D.

# VII grado (dP - Do maggiore)

CIII

Da VII (dP) a I

Da VII (dP) a I in primo rivolto

Da VII (dP) in primo rivolto a I

Da VII (dP) in primo rivolto a I in primo rivolto

CI

Da VII (dP) a VI

Da VII (dP) a VI in primo rivolto

CIII

CI

Da VII (dP) in primo rivolto a VI

Da VII (dP) in primo rivolto a VI in primo rivolto